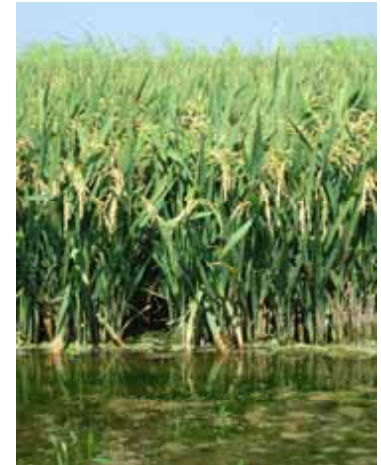


LCRA's Raw Water Supplies



Overview

- LCRA's Water Supplies
 - How much water does LCRA have?
 - Current system
 - Water rights
 - Water Management Plan (WMP)
 - How much water is contracted for or otherwise committed?
 - Firm supplies
 - Interruptible supplies
 - Where are our customers using water? How much is being used?
 - What is LCRA doing to increase supplies?

Current and Future Sources of Firm Water – Potential Strategies

Current Firm Supply

Lakes Buchanan/Travis Maximum Firm Supply:
445,226 AFY

+ Owned Run-of-River Rights

	Authorized (AFY)
Garwood ¹	133,000
Gulf Coast ²	262,500
Lakeside ²	186,250
Pierce Ranch ²	55,000
Total	636,750 AFY

Firm Supply Range:
200,000 AFY to 500,000 AFY

Current Commitments = 507,000 AFY
Sources include: Lakes Buchanan/Travis and LCRA Run-of-River Rights

Current Maximum Firm Water Use = 143,600 AFY

+ In The Works

- LCRA-SAWS Water Project Studies (up to 150,000 AFY)
- Excess Flows Permit (Firm Yield ~ unconfirmed)
- Groundwater (LCRA-SAWS Water Project)
- Return Flows from Interbasin Transfer, Water Conservation, Desalinization, etc.

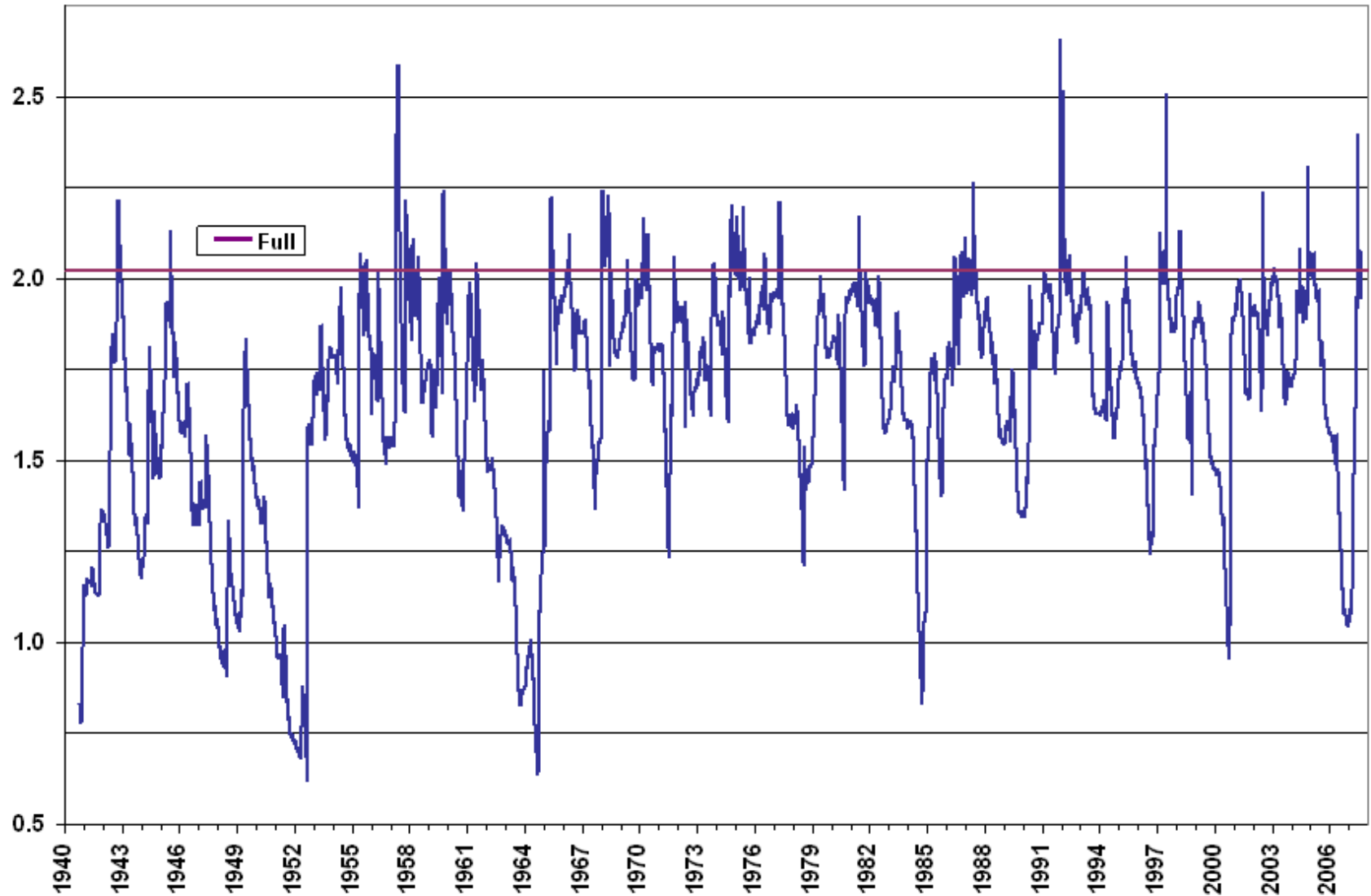
Note 1: Application to amend this water right is under TCEQ review.

Note 2: These three rights are subordinated to City of Austin's senior municipal water right.

Historic Look At Combined Storage in Lakes Buchanan and Travis

Highland Lakes - Combined Storage

(Million Acre-Feet)



LCRA's Water Management Plan



- First of its kind in the state
- LCRA is only river authority with a comprehensive water management plan requirement
- Why does LCRA have a Water Management Plan and no one else does?

Water Management Plan – What is it?

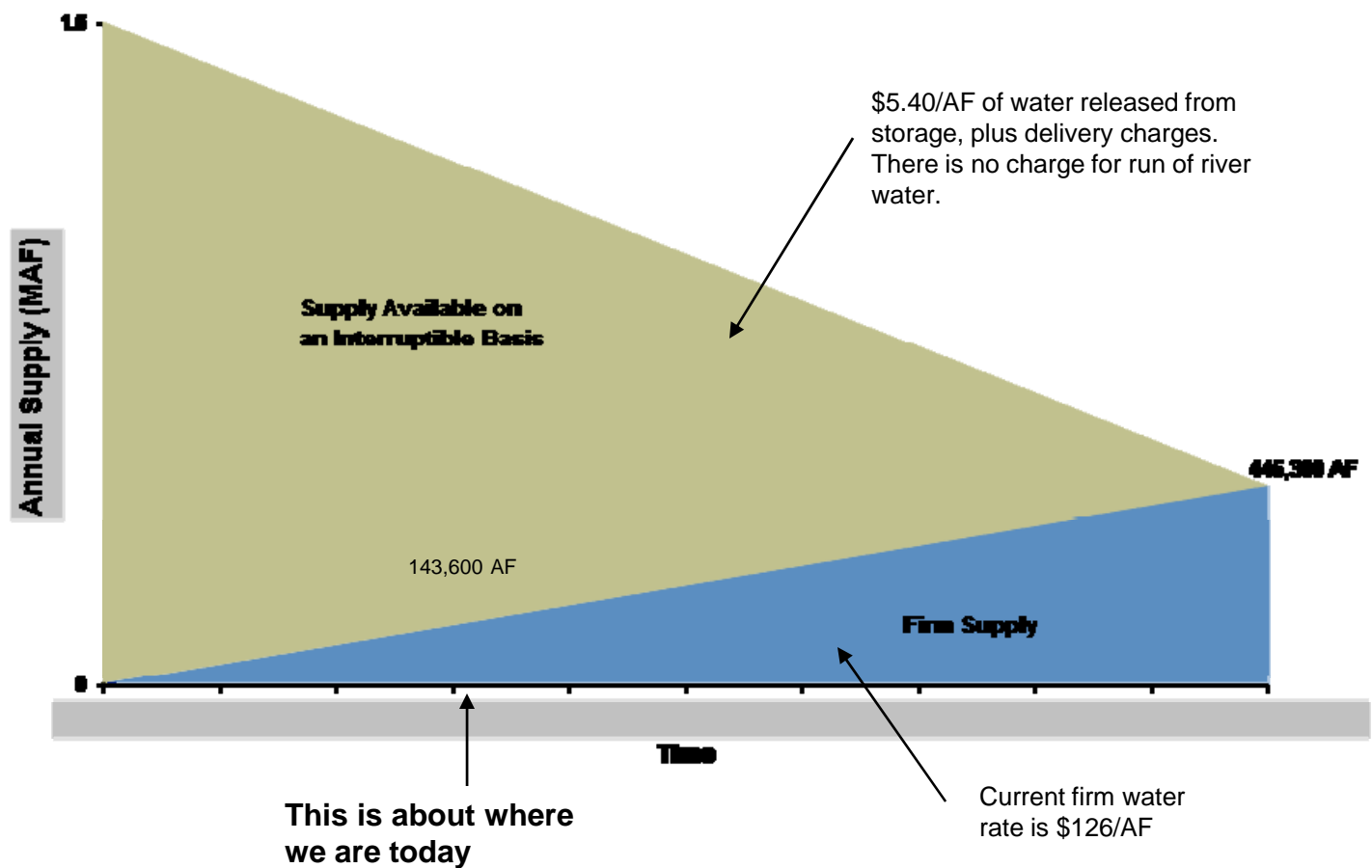
- Amendment to the water rights for Lakes Buchanan & Travis
- **Determines day-to-day operation of Lakes Buchanan & Travis and allocation of inflow below Austin**
- First developed in 1989 & amended twice
- Any changes proposed must be approved by LCRA Board and TCEQ
- Current TCEQ-approved WMP dated 1999
- Latest update submitted to TCEQ on May 2003
- Still Pending
- **Stakeholder process**

WMP: Key Elements

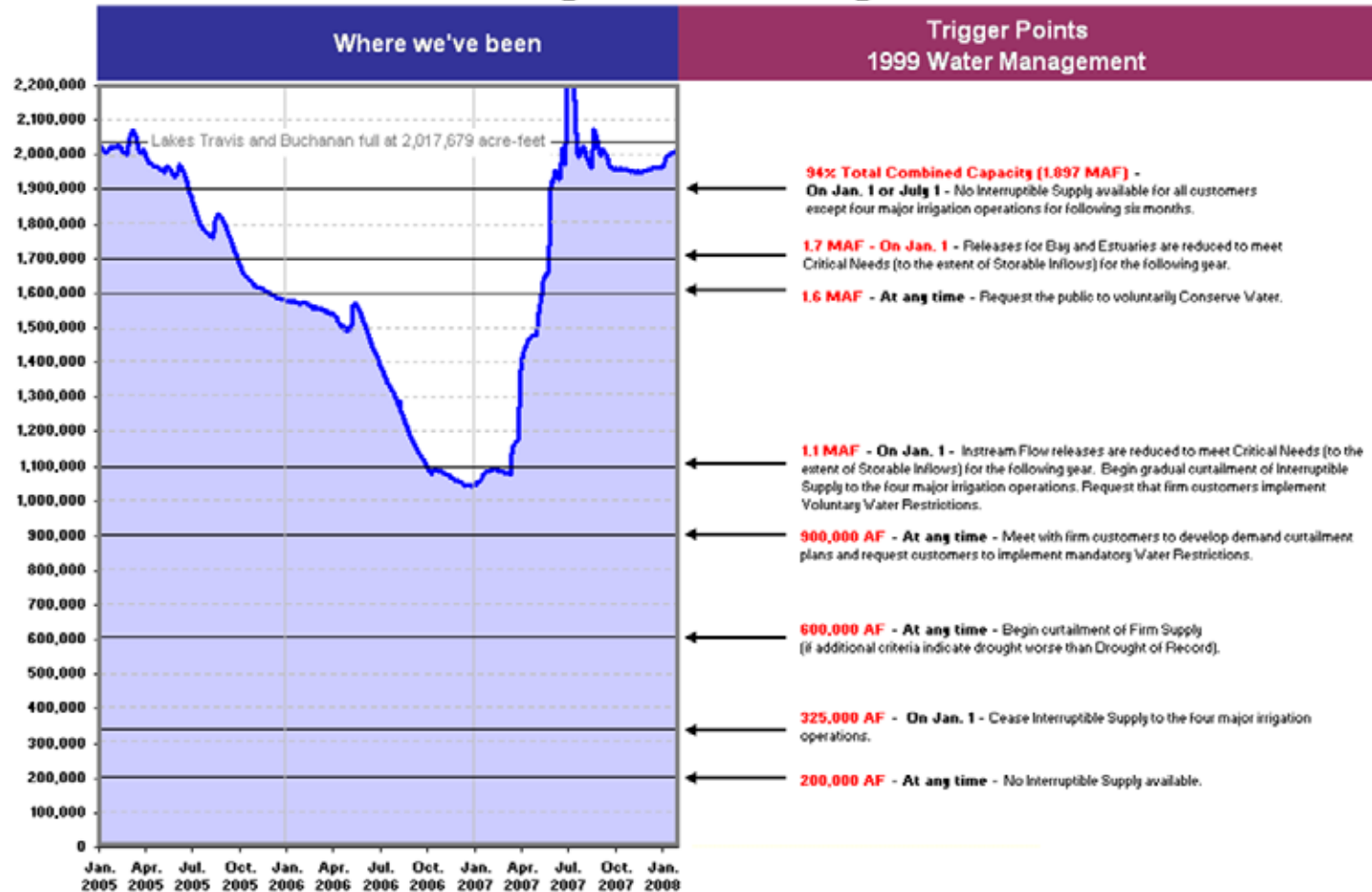
- **Allocate Supply**
 - Establishes a firm yield for lakes- **445,266 AFY**
 - Sets up allocation procedures and operating policies
 - Defines trigger levels for curtailment of interruptible water to customers
 - Quantify annual interruptible supply availability
 - Develop guidelines for meeting downstream environmental needs
- **Drought Management Plan**
 - Planning for management through the “Drought-of-Record”
 - Establishes criteria for determining drought more severe than “Drought-of-Record”

Firm vs Interruptible Supply Availability in Lakes Buchanan and Travis

Firm and Interruptible Supply - Concept



Highland Lakes Storage



Note: One acre-foot equals 325,851 gallons.

* These are typical ranges for lake levels on Buchanan and Travis when the water stored in both lakes is at this amount. — Historic Lake Capacity (AF)
Levels could vary depending on rainfall patterns.

% Storage Capacity	Impacted
100%	None
94%	Non-Irrigation Operations Customers for interruptible supply
84%	Bay and Estuary Inflows (switch to "Critical")
79%	"Firm" Voluntary Conservation
55%	<ul style="list-style-type: none"> - Irrigation Operations Curtailment of interruptible supply - Instream Flows (switch to "Critical")
45%	"Firm" Mandatory Conservation
30%	Possible "Firm" Curtailment

Highland Lakes Water Supply

What is it used for?

- **Firm Supply of the Lakes = 445,266 ac-ft/yr**
- **Part of LCRA's Firm Supply**
 - **Contracts with entities for Municipal & Industrial (M&I) needs**
 - Sole source and back-up existing water rights
 - **LCRA's own M&I needs**
 - Retail water systems and power plants – Ferguson, Sim Gideon-Lost Pines & FPP
 - **Environmental needs**
- **Interruptible Supply of up to 1.5 million ac-ft/yr**
 - **For the four major irrigation operations– to supplement the RoR supply**
 - annual contracts
 - price per acre-foot significantly lower than the Firm water price
 - **For environmental needs**

Environmental Flow Needs

- Instream Flow Needs for the Lower Colorado River
 - multiple locations downstream of Lake Travis
 - Critical & Target
- Freshwater Inflow needs for Bays and Estuaries of Matagorda Bay
 - Critical & Target

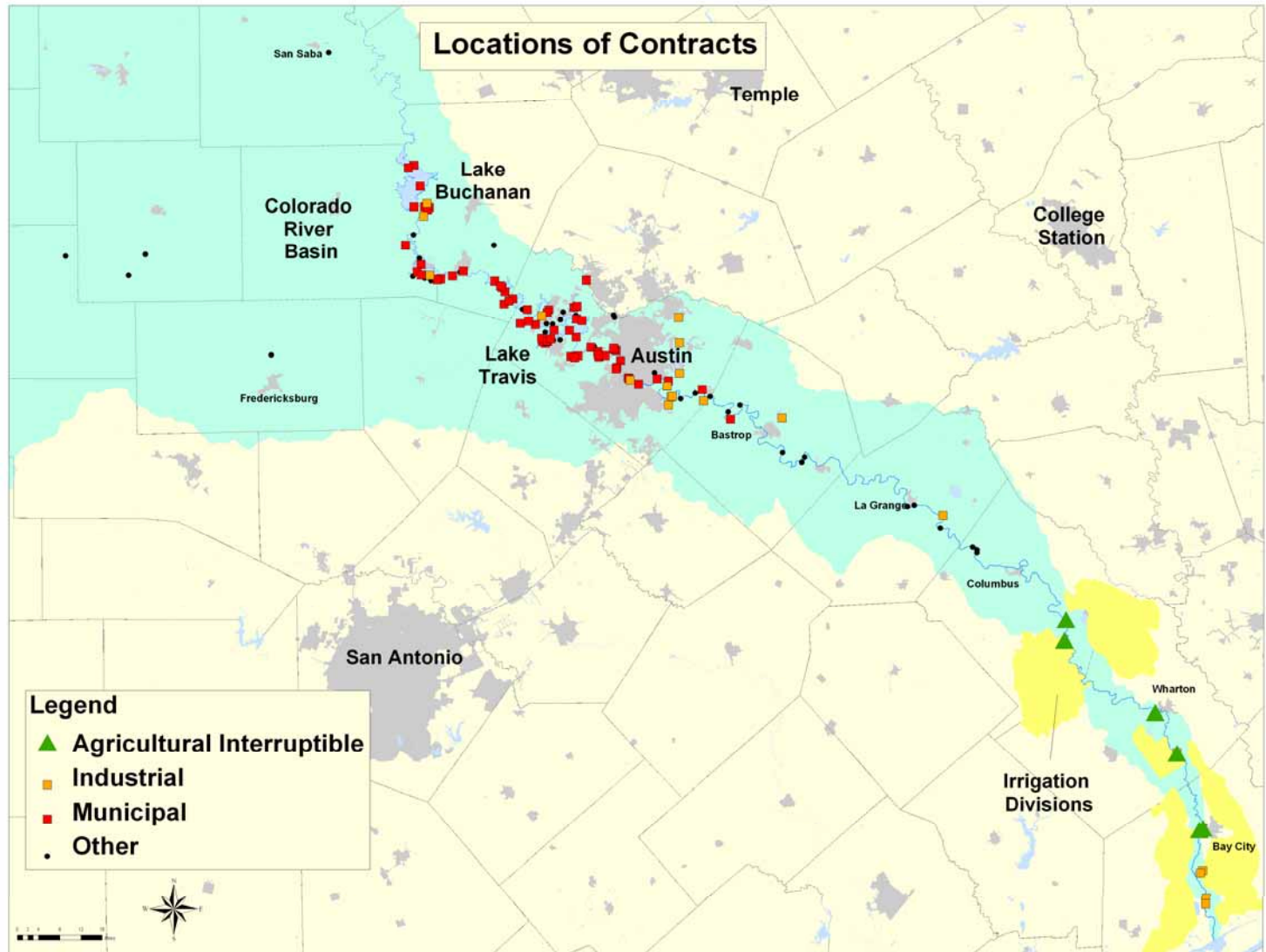


How much water is contracted for or otherwise committed?

Current Commitments

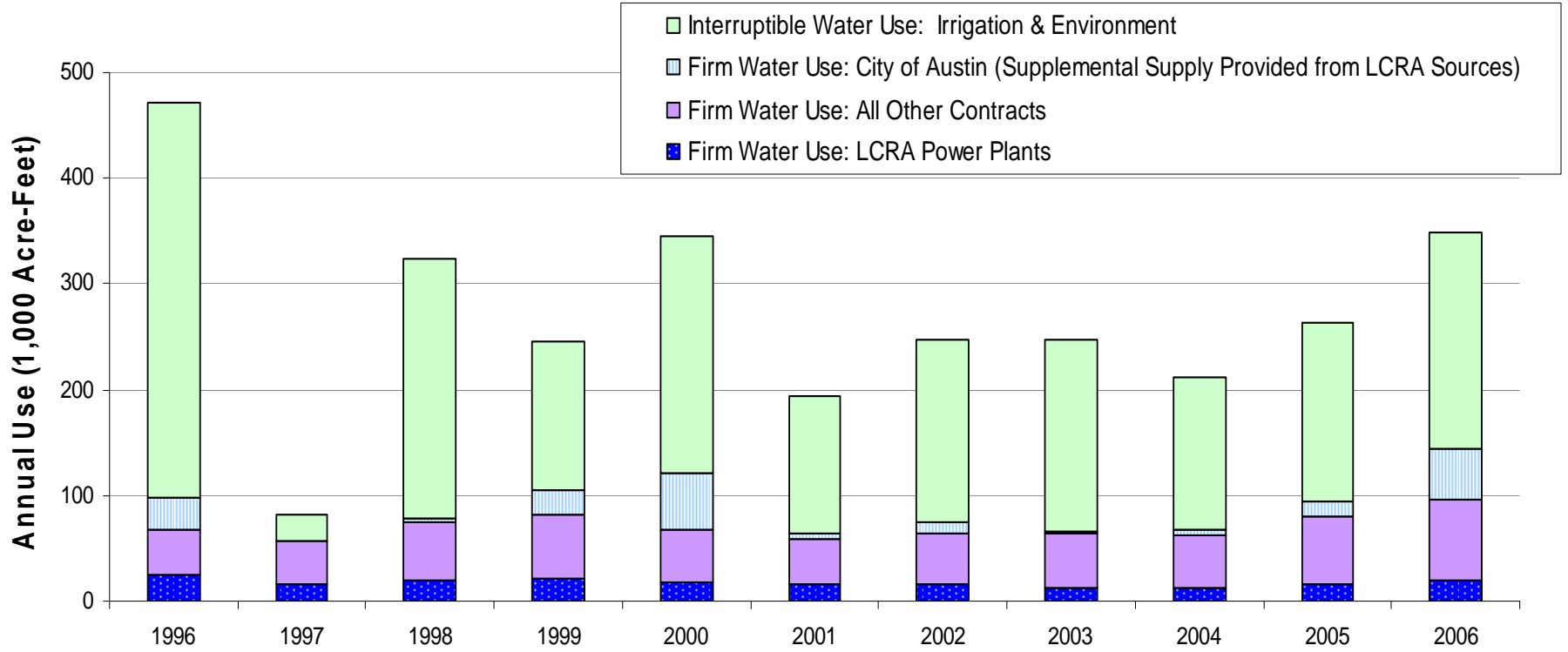
January 2008 Board Operations Report		Amounts are in acre-feet per year (AFY)
		Firm Water
1	TOTAL CONTRACTS COMMITMENTS	457,613
	City of Austin- Estimated backup water supply to City's water rights	138,560
	Brazos River Authority	25,000
	Leander	24,000
	Cedar Park	18,000
	Pflugerville	12,000
	South Texas Project	40,000
	LCRA Power Plants	63,851
	LCRA Water & Wastewater Utilities	10,888
	Remainder Contracts/Resolutions	91,874
	Environmental - Current & Pending WMP	33,440
2	Currently Reserved By LCRA Board in WMP for Future Use	50,000
3	Total of Commitments & Reserved:	507,613

**Where are our customers using water?
How much is being used?**



Water Being Used from Lakes

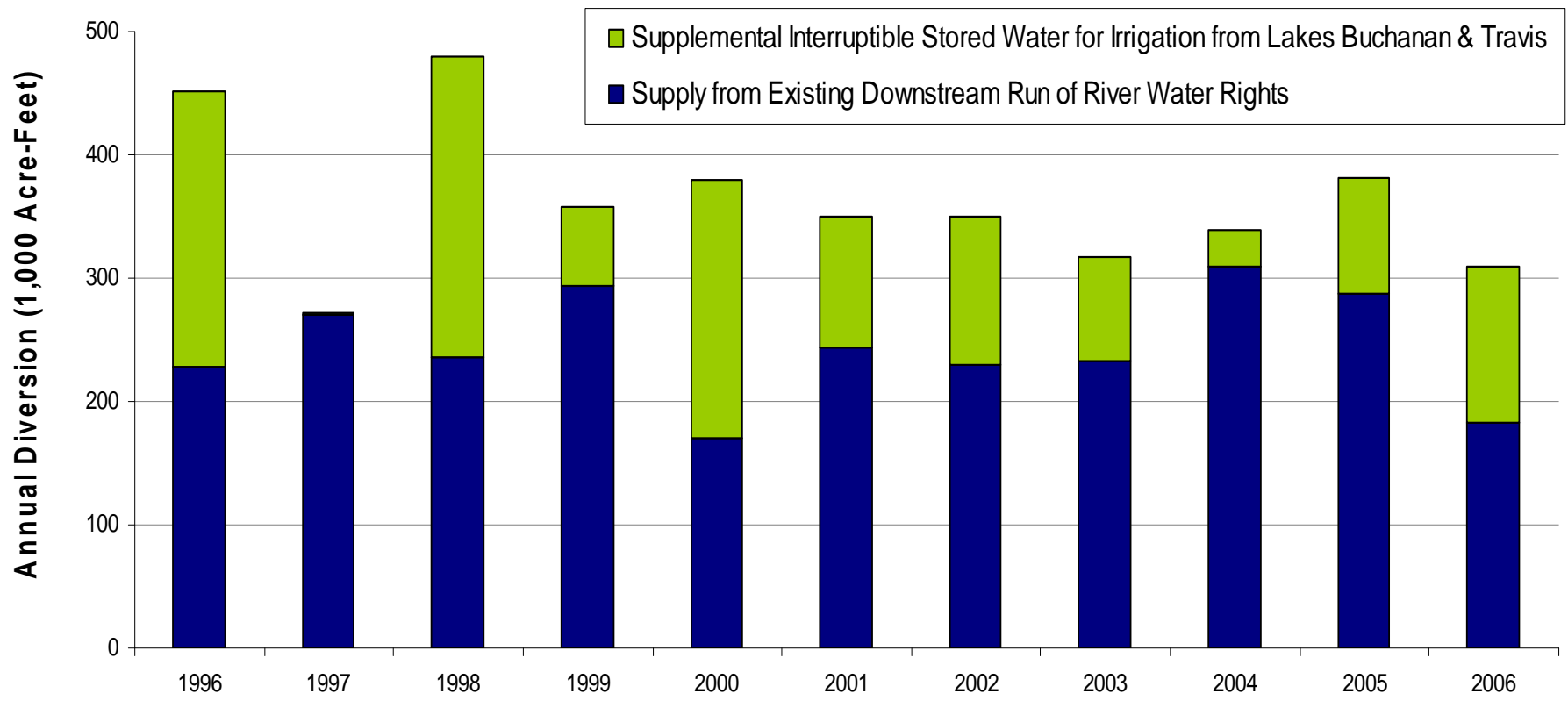
Total Water Use from Lakes Buchanan and Travis, 1996 - 2006 *



* In addition to providing firm water supply from Lakes Buchanan & Travis, LCRA also provides interruptible stored water supply for irrigation and for meeting environmental flow needs

Irrigation Use

Diversions by the Four Downstream Irrigation Operations, 1996 - 2006



What is LCRA doing to increase supplies?

Major Events

- **1960** Gulf Coast Water Right Acquired
- **1976** STP Settlement
- **1983** Lakeside Water Right Acquired
- **1985** LCRA/CRMWD Stacy Reservoir Agreement
- **1987** Water Rights Adjudicated
- **1989** First Water Management Plan Approved
- **1991** Instream Use Study
- **1992** Water Management Plan First Amendment Approved
- **1993** Pierce Ranch Water Right Acquired (partial)
- **1997**
 - Freshwater Inflow Needs Study (FINS)
 - Corpus Christi purchase 35,000 acre-feet of the Garwood water right
- **1999**
 - Water Management Plan Second Amendment Approved
 - Garwood Water Right Acquired
 - Contract with the City of Austin
 - Flood Flow Permit Application Submitted
- **2000** Remainder Pierce Water Right Acquired
- **2001** First Region K Water Plan Completed
- **2003**
 - San Antonio Water System Feasibility Study Begins
 - Water Management Plan Third Amendment submitted to TCEQ
- **2006**
 - Second Region K Water Plan Completed
 - Freshwater Inflows Needs Update Completed
 - STPNOC Settlement
- **2007** Austin Bed & Banks and Supplemental Water Supply agreements

LCRA's Pending Water Right Applications @ TCEQ:

- **Excess Flows / Flood flows application #5731**
 - Submitted on March 31, 1999
 - Last activity: TCEQ Public meeting held on September 26, 2006
- **Garwood Amendment – to add diversion points**
 - Submitted on August 28, 2002
 - Last activity: Under technical review by TCEQ
- **Reuse Application - Amend Lakes Buchanan and Travis Water Rights:**
 - Submitted on November 12, 2002
 - After City of Austin's Application for Reuse on April 5, 2002
 - Last activity: application still pending
- **WMP Amendment – to change the trigger level and more**
 - Submitted on May 16, 2003
 - Latest activities: TCEQ Public meeting November 11, 2004. TCEQ response to comments: March 31, 2005
 - LCRA met with various protestants on August 15, 2006 for a potential Settlement Agreement
- **STP water right Amendment – to add a diversion point**
 - Submitted on April 24, 2006
 - As a result of the Settlement Agreement between LCRA and STPNOC in January 2006, the previous Contract was revised.

Questions?

